



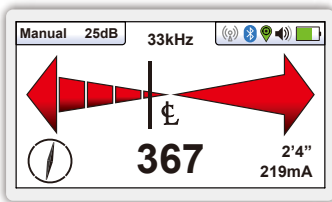
# vLoc3-9800 UTILITY LOCATOR

- Distance-sensitive Left / Right Guidance™
- Fully-automatic gain control
- Directional compass indicator
- Internal data logging
- Cloud-based data warehousing
- Optional Bluetooth connectivity

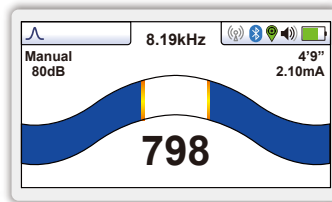
The **vLoc3-9800**'s patented Distance Sensitive Left/Right Guidance and audible tone guide you to the path of the buried utility. The current measurement and compass direction indicator features confirm that you are on target.

The user-configurable vLoc3-9800 contains two passive locate modes, fault-find mode, and a range of configurable frequencies from 98Hz to 131kHz. Visual and mechanical vibration alerts can be configured by the user providing warnings for shallow depth, overload, overhead cables, and excessive swinging. Plug-in-play options for the receiver include an optional Bluetooth module usable with external GPS devices and the plug-in vLoc3-MLA (marker locator adapter) to locate buried markers.

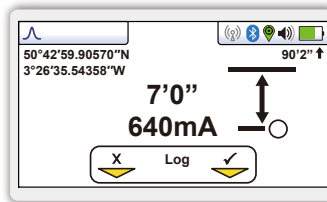
Use the free VM-MAP smartphone application to create real-time maps with GPS data and data from the locator such as time, date, depth of cover and current on the line, and add custom comments to each entry. Data captured by external GPS devices via Bluetooth can be downloaded for further analysis and used with GIS systems or google maps.



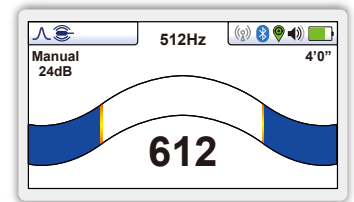
**Left/Right Locate Screen** - Shows left/right indication, Signal strength with continuous depth and current from the line.



**Peak Locate Screen** - shows a peak curtain style bar graph, signal strength with continuous depth and current from the line.



**Line Info Screen** - shows the depth to the utility, current on the line and option to log the locate results. GPS coordinates are shown if active.



**Sonde Locate Screen** - shows a peak curtain style bar graph, signal strength and continuous depth for sonde locating.

- Alkaline and Li-ion Batteries**
- Alkaline = typically 12-hours intermittent use
  - Li-ion = typically 27-hours intermittent use

- USB Data Port**
- Download data logs
  - Update the receivers firmware
  - Add or remove frequencies and options

- Accessory Port**
- Charge the Li-ion battery
  - A-Frame Fault Locator
  - Vehicle charging lead
  - Remote Stethoscope Antenna

- Antenna Configuration**
- Upper Horizontal Guidance Antenna
  - Compass Antenna
  - Left Displacement Antenna
  - Right Displacement Antenna

- Ultra Bright LCD**
- High visibility 4.3"/10cm LCD
  - Auto back-light

- Module Compartment**
- Optional plug-and-play Bluetooth module

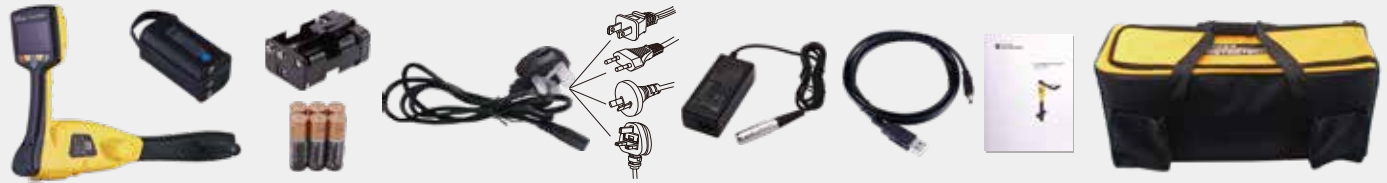
- Data Logging**
- 50 Million record internal storage
  - GPS coordinates (if Bluetooth active)
  - Download data with MyLocator app
  - Access data via VMMMap Cloud app

- Construction**
- IP65 and NEMA 4 rating
  - Lightweight at 4.6lbs./2kg

- Optional plug-in MLA marker locator**

vLoc3-9800 Receiver Specifications	
<b>Construction</b>	High impact ABS injection molded housing
<b>Weight &amp; Dimensions</b>	4.4lbs (2kg) / 12.6in(L) x 8.6in(W) x 26.6in(H) (321mm x 219mm x 676mm)
<b>Display</b>	Transmissive 480 x 272 Pixel, 16-bit Color, High-visibility LCD, 4.3" / 10cm
<b>Battery options</b>	Rechargeable custom Lithium-ion batteries with 100-240V AC mains charger Six AA Alkaline batteries
<b>Battery life</b>	Lithium-ion – typically 27-hours intermittent use at 70°F (21°C) Alkaline – typically 12 hours intermittent use at 70°F (21°C)
<b>Operating frequencies</b>	Configurable frequencies from 98Hz to 200 kHz Power - 50Hz and 60Hz Radio - 10kHz - 22.7kHz bandwidth
<b>Operating modes</b>	Classic Locate left/right indication and Sonde Locate
<b>Data logging and transfer</b>	50 Million records - Records include depth, current, frequency, mode, gain setting, signal strength, GPS coordinate, date and time (if Bluetooth active) Download data from the receiver using the free MyLocator3 desktop app, save as xlsx, txt, shp and kml files
<b>Environmental</b>	IP65 and NEMA 4

## What's in the box



## Popular Accessories (See our Accessories Brochure for a full list of receiver and transmitter accessories)



## Compatible Transmitters

### 1- Watt Transmitters



VM-550FF / VM-560FF

### 5-Watt Transmitter



Loc3-5Tx

### 10-Watt Transmitter



Loc3-10Tx

Local Vivax-Metrotech Distributor:

### Vivax-Metrotech Corporation

3251 Olcott Street, Santa Clara, CA 95054, USA

**T/Free: 1-800-446-3392**

**Tel: +1-408-734-3880**

www.vivax-metrotech.com

Tag us on social media @vivax\_metrotech



V1.6

Please visit our website for full product specifications.