



vLoc3-XLF

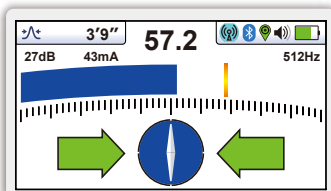
Low-Frequency Locator

- Optimized for low-frequencies
- Ideal for long-line and pipeline networks
- Color-coded EM distortion warnings
- Cloud-based data warehousing
- Internal data logging
- Optional Bluetooth connectivity

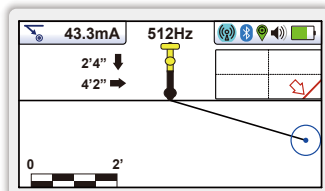
The **vLoc3-XLF locator** uses extra-low frequencies specific for long-line locating. The low frequencies used in the XLF are designed to travel further distances with less coupling onto adjacent lines and be less susceptible to distortion. A few applications the XLF is ideal for are long-haul fiber lines, metropolitan loop networks, and pipeline transmission lines.

Along with the classic locate screens, the vLoc3 series locators offer new locate perspective screens of Vector Locate for fully automatic, non-walk-over locating, Transverse Graph showing both peak and null modes simultaneously immediately showing any signal distortion, Plan View showing the relative orientation of the cable at any angle and a new Sonde Screen with omnidirectional guidance providing arrows leading to the sonde from any direction.

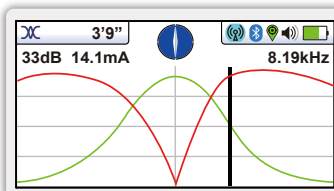
The user-configurable vLoc3 series locators have eight passive locate modes, fault-find modes and a range of configurable frequencies from 32Hz to 32.8kHz. Visual and mechanical vibration alerts can be configured by the user providing warnings for shallow depth, overload, overhead cables, and excessive swinging. Plug-in-play options for the receiver include an optional Bluetooth module usable with external GPS devices and the plug-in vLoc3-MLA (marker locator adapter) to locate buried markers.



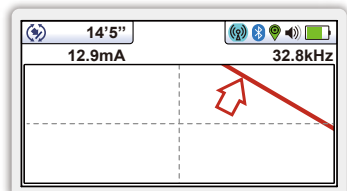
Classic Screen - as in previous vLoc locators, with the addition of three color-coded distortion levels



Vector Locate - shows orientation, line position, and distance relative to the locator in 3D



Transverse Plot Screen - is used to display the peak and null to compare distortion shape



Plan View Screen - displays the theoretical line in 2D from above ground in omnidirectional mode



Alkaline and Li-ion Batteries

- Alkaline = typically 12-hours intermittent use
- Li-ion = typically 27-hours intermittent use



Ultra Bright LCD

- High visibility 4.3"/10cm LCD
- Auto backlight



USB Data Port

- Update the receiver's firmware
- Download datalogs

Module Compartment

- Optional plug-and-play Bluetooth module



Accessory Port

- Remote Stethoscope Antenna
- A-Frame Fault locator
- Vehicle charging lead
- Charge the receiver battery

Data Logging

- 50 Million record internal storage
- GPS coordinates (if Bluetooth is active)
- Download data with the MyLocator3 app
- Access data via the VMMMap web portal



Antenna Configuration

- Two sets of Omnidirectional Antennas, each comprising:
- Two Compass Antennas
 - Two Horizontal antennas
 - Two Vertical antennas



Construction

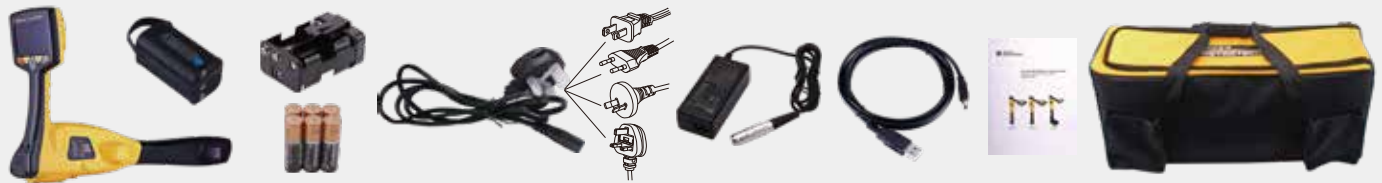
- High impact ABS plastic construction
- IP65 and NEMA 4 rating
- Lightweight at only 4.6lbs / 2.1kg



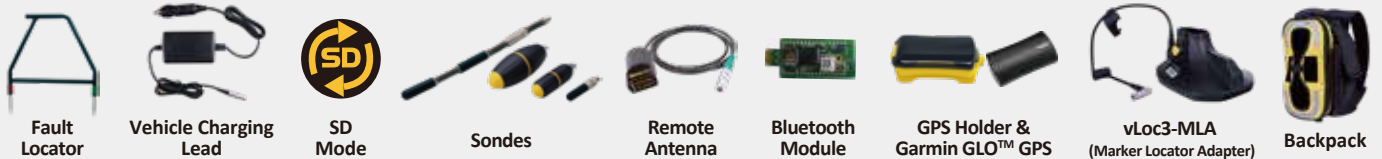
Optional plug-in MLA marker locator

vLoc3-XLF Receiver Specifications	
Construction	High impact ABS injection molded housing
Weight & Dimensions	4.6lbs (2.1kg) / 12.6in(L) x 4.9in(W) x 26.6in(H) (321mm x 124mm x 676mm)
Display	4.3"/10.9cm Transmissive 480 x 272 Pixel, 16-bit Color, High-visibility LCD
Battery options	Rechargeable custom Lithium-ion batteries with 100-240V AC mains charger Six x AA Alkaline batteries
Battery life	Lithium-ion – typically 27-hours intermittent use at 70°F (21°C) Alkaline – typically 12 hours intermittent use at 70°F (21°C)
Operating frequencies	Configurable frequencies from 32Hz to 32.8kHz Power - 50Hz and 60Hz Radio - 10kHz - 22.7kHz bandwidth
Operating modes	Classic Locate (Bar graph), Transverse Graph Mode, Plan View (omnidirectional) Vector Locate (Lateral Position & Depth), Sonde Locate
Data logging and transfer	50 Million records - Records include depth, current, frequency, mode, gain setting, signal strength, GPS coordinates, date and time (if Bluetooth is active) Download receiver data using the free MyLocator3 desktop app, save in csv, kml, shp, txt, xls and xlsx formats
Environmental	IP65 and NEMA 4

What's in the box



Popular Accessories (See our Accessories Brochure for a full list of receiver and transmitter accessories)



Compatible Transmitters

5-Watt Transmitter



Loc3-5Tx

10-Watt Transmitter



Loc3-10Tx

25-Watt Transmitter



Loc3-25Tx

150-Watt Transmitter



Loc-150Tx

Local Vivax-Metrotech Distributor:

Vivax-Metrotech Corporation

3251 Olcott Street, Santa Clara, CA 95054, USA

T/Free: 1-800-446-3392

Tel: +1-408-734-3800

www.vivax-metrotech.com

Tag us on social media @vivax_metrotech



V1.4

Please visit our website for full product specifications.